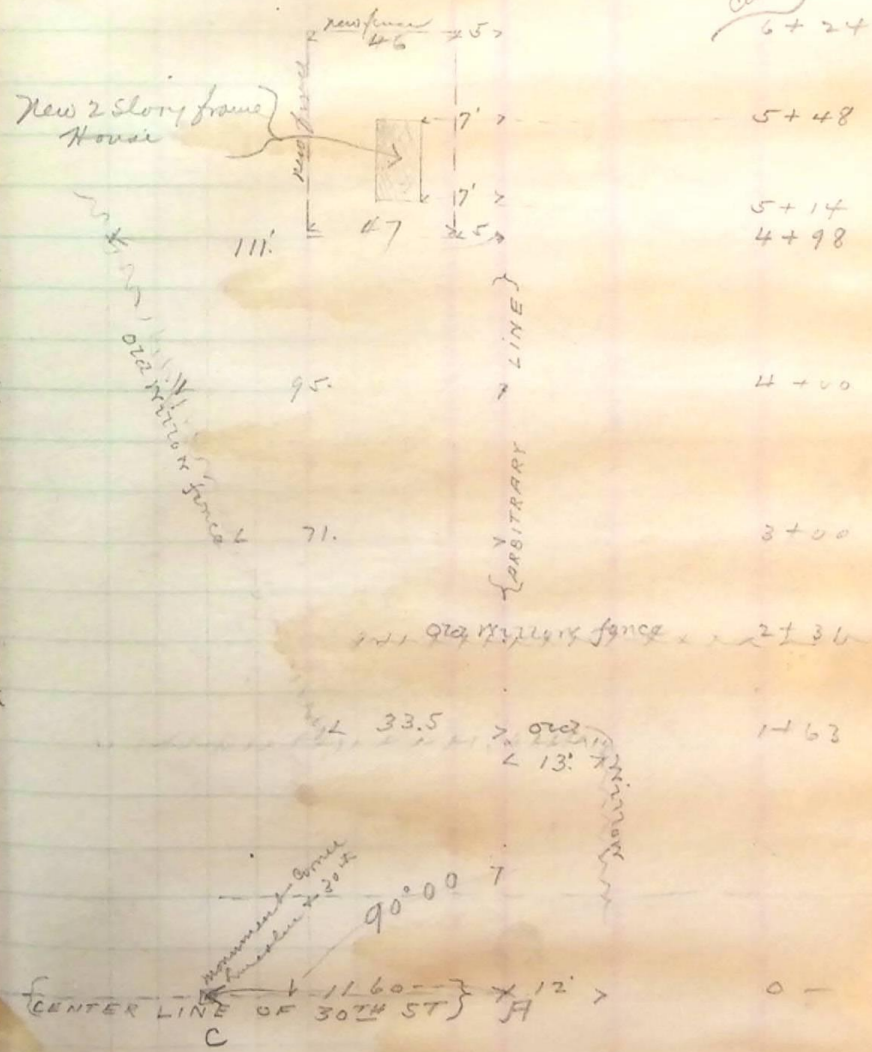


Survey to determine whether there are any buildings on a piece of land in lot 25 - block 10 - Smith Garden Survey - viz. the north end of said lot.

Sight or monuments B & C (see sketch on page opposite) then in transit at point A. Thence turn R + south  $90^{\circ} 00'$  and take notes as shown on opposite page ✓  
Dec 14 92

Stationed from center 30th -  
6 + 24



Monument on front  
+ 30th

Monument on back  
+ 24th

fence